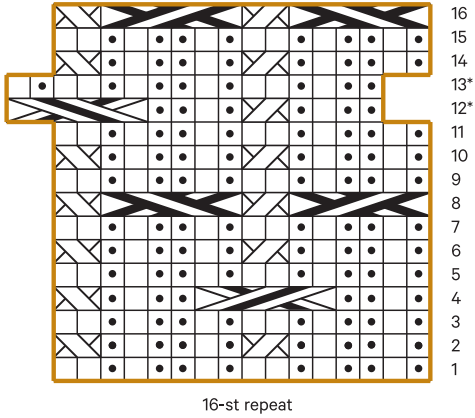
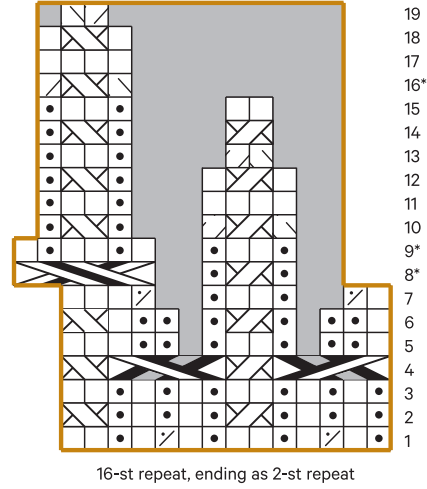


UPDATED CHARTS AND KEY







Cable Chart




Decrease Chart





Key


	knit		no stitch
	purl		pattern repeat
	k2tog	*	see pattern for special instructions for this round
	ssk		1/1 RC
	p2tog		1/1 LC


 sl 3 to cn and hold to back, k1, p1, then p2tog, p1 from cn (1 st dec'd)

 sl 2 to cn and hold to front, p1, p2tog, then p1, k1 from cn (1 st dec'd)

 sl 3 to cn and hold to back, k1, p1, k1, then k1, p1, k1 from cn

 sl 3 to cn and hold to front, k1, p1, k1, then k1, p1, k1 from cn

 sl 3 to cn and hold to back, p1, k1, p1, then p1, k1, p1 from cn

 sl 3 to cn and hold to front, p1, k1, p1, then p1, k1, p1 from cn